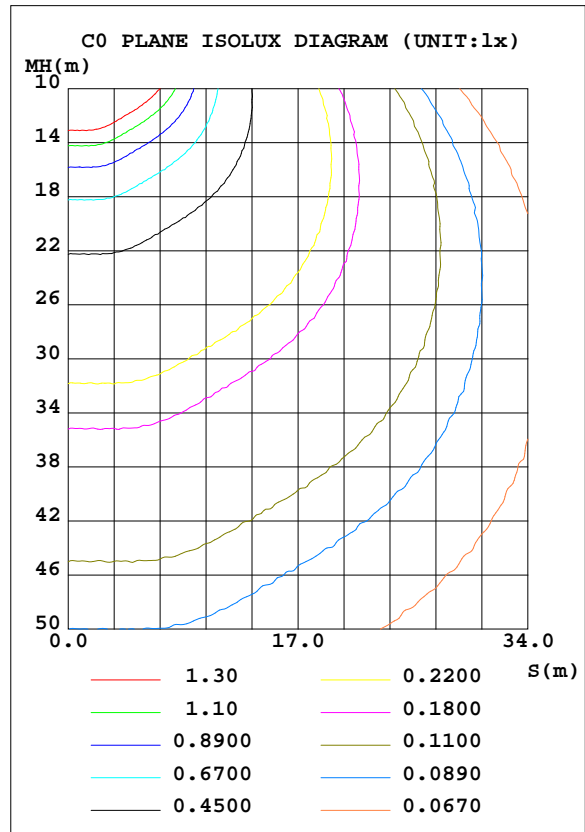
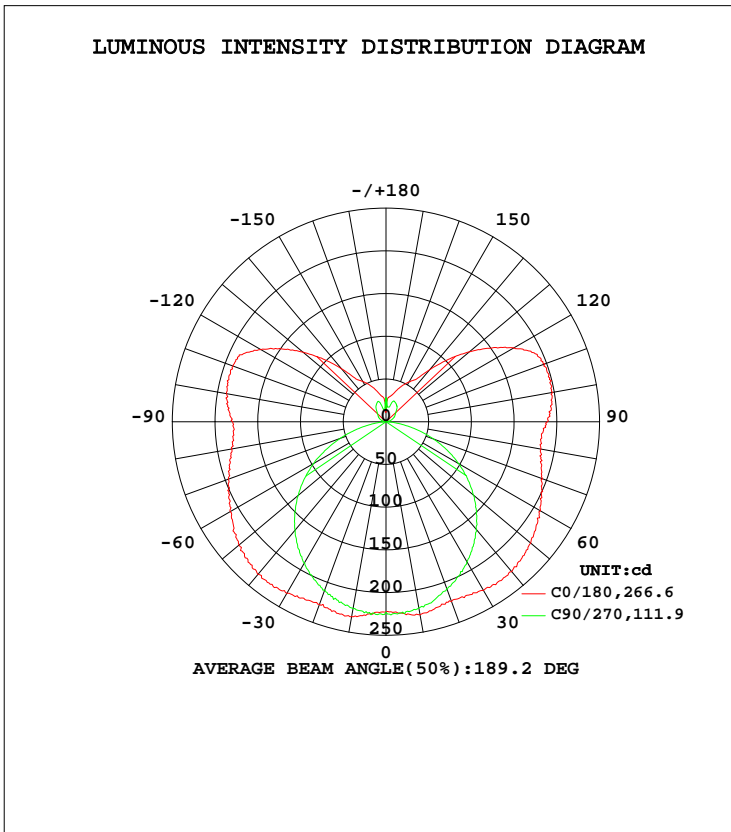


LUMINAIRE PHOTOMETRIC TEST REPORT

Test:U:120.17V I:0.2405A P:28.660W PF:0.9919 Freq:60.00Hz Lamp Flux:1540.82x1 lm		
NAME:	TYPE:	WEIGHT:
SPEC.:	DIM.:	SERIAL No.:
MFR.:	SUR.:	Shielding Angle:

DATA OF LAMP		PHOTOMETRIC DATA Eff: 53.76 lm/W			
MODEL	VN27-36-30S-952C5-MVTD-SB00-3500K	I <sub>max</sub> (cd)	234.0	S/MH(C0/180)	1.60
NOMINAL POWER(W)	28	LOR(%)	100.0	S/MH(C90/270)	1.28
RATED VOLTAGE(V)	120	TOTAL FLUX(lm)	1540.8	η UP, DN(C0-180)	17.1, 32.8
NOMINAL FLUX(lm)	1540.82	CIE CLASS	SEMI-D.	η UP, DN(C180-360)	17.0, 33.0
LAMPS INSIDE	1	η up(%)	34.2	CIBSE SHR NOM	1.50
TEST VOLTAGE(V)	120	η down(%)	65.8	CIBSE SHR MAX	1.55



C Range: 0 - 360DEG  
 C Interval: 22.5DEG  
 Test Speed: HIGH  
 Temperature:25.1DEG  
 Operators:Wilson  
 Test Date:2022-12-09

γ Range: 0 - 180DEG  
 γ Interval: 0.5DEG  
 Test System:EVERFINE GO-R5000\_V2 SYSTEM V2.00.444  
 Humidity:60.5%  
 Test Distance:2.617m [K=1.0000]  
 Remarks: File No.: WT-F-504-3206-01-A

Checker: Near Gao

Assessor: Akin Xu

ZONAL FLUX DIAGRAM

ZONAL FLUX DIAGRAM:

γ	C0	C45	C90	C135	C180	C225	C270	C315	γ	Φ zone	Φ total	%lum, lamp
10	229.3	224.3	221.2	227.8	231.8	225.8	222.0	227.1	0- 10	21.46	21.46	1.39,1.39
20	224.0	217.4	208.0	223.9	227.5	222.7	209.3	219.9	10- 20	63.23	84.69	5.5,5.5
30	228.0	205.3	189.5	209.6	231.8	209.3	190.6	208.4	20- 30	99.23	183.9	11.9,11.9
40	229.2	196.5	164.5	201.5	233.1	200.8	165.6	200.7	30- 40	128.6	312.6	20.3,20.3
50	221.1	183.4	133.4	189.7	224.4	187.8	134.1	188.6	40- 50	147.7	460.3	29.9,29.9
60	208.9	163.2	98.35	171.3	210.5	167.5	97.34	170.1	50- 60	153.8	614.1	39.9,39.9
70	195.0	140.0	59.61	149.7	196.4	144.0	57.12	148.0	60- 70	147.6	761.7	49.4,49.4
80	184.2	120.1	21.11	130.2	183.4	122.6	18.36	129.8	70- 80	132.5	894.2	58,58
90	189.1	118.5	0.8425	123.8	179.3	115.6	0.6673	131.4	80- 90	120.0	1014	65.8,65.8
100	198.1	126.8	2.619	132.8	189.3	123.9	2.517	139.4	90-100	124.2	1138	73.9,73.9
110	197.9	125.1	6.876	131.6	190.5	122.3	6.135	134.6	100-110	123.4	1262	81.9,81.9
120	173.0	96.79	11.17	104.1	169.0	95.05	9.720	103.7	110-120	104.5	1366	88.7,88.7
130	127.4	64.45	14.48	71.70	126.7	63.84	12.43	68.52	120-130	74.00	1440	93.5,93.5
140	79.86	46.59	19.83	51.43	81.07	46.55	17.26	50.28	130-140	45.69	1486	96.4,96.4
150	53.93	39.28	23.95	43.22	54.67	39.92	22.91	41.54	140-150	27.42	1513	98.2,98.2
160	40.78	31.98	25.80	34.71	42.08	32.91	25.27	33.01	150-160	17.01	1530	99.3,99.3
170	30.50	20.72	17.62	23.58	30.81	27.97	14.73	28.72	160-170	8.348	1539	99.9,99.9
180	14.99	14.99	14.99	14.99	14.83	14.83	14.83	14.83	170-180	2.087	1541	100,100
DEG	LUMINOUS INTENSITY:cd									UNIT:lm		

Conical surface Flux(90deg): 384.82 lm

%lum = 25.0%

%lamp = 25.0%

Conical surface Flux(120deg): 614.06 lm

%lum = 39.9%

%lamp = 39.9%

C Range: 0 - 360DEG  
 C Interval: 22.5DEG  
 Test Speed: HIGH  
 Temperature:25.1DEG  
 Operators:Wilson  
 Test Date:2022-12-09

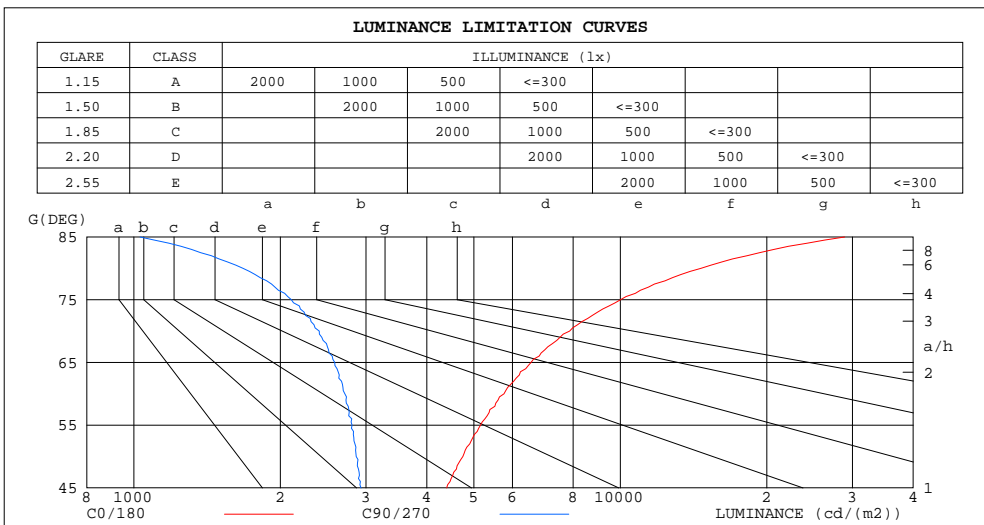
γ Range: 0 - 180DEG  
 γ Interval: 0.5DEG  
 Test System:EVERFINE GO-R5000\_V2 SYSTEM V2.00.444  
 Humidity:60.5%  
 Test Distance:2.617m [K=1.0000]  
 Remarks: File No.: WT-F-504-3206-01-A

Checker: Near Gao

Assessor: Akin Xu

LUMINANCE LIMITATION CURVES

Test:U:120.17V I:0.2405A P:28.660W PF:0.9919 Freq:60.00Hz Lamp Flux:1540.82x1 lm		
NAME:	TYPE:	WEIGHT:
SPEC.:	DIM.:	SERIAL No.:
MFR.:	SUR.:	Shielding Angle:



LUMINANCE cd/(m2)		
G(DEG)	C0/180	C90/270
85	28905	1030
80	14635	1677
75	10009	2108
70	7867	2405
65	6552	2589
60	5764	2714
55	5156	2808
50	4746	2864
45	4395	2930

C Range: 0 - 360DEG  
 C Interval: 22.5DEG  
 Test Speed: HIGH  
 Temperature: 25.1DEG  
 Operators: Wilson  
 Test Date: 2022-12-09

γ Range: 0 - 180DEG  
 γ Interval: 0.5DEG  
 Test System: EVERFINE GO-R5000\_V2 SYSTEM V2.00.444  
 Humidity: 60.5%  
 Test Distance: 2.617m [K=1.0000]  
 Remarks: File No.: WT-F-504-3206-01-A

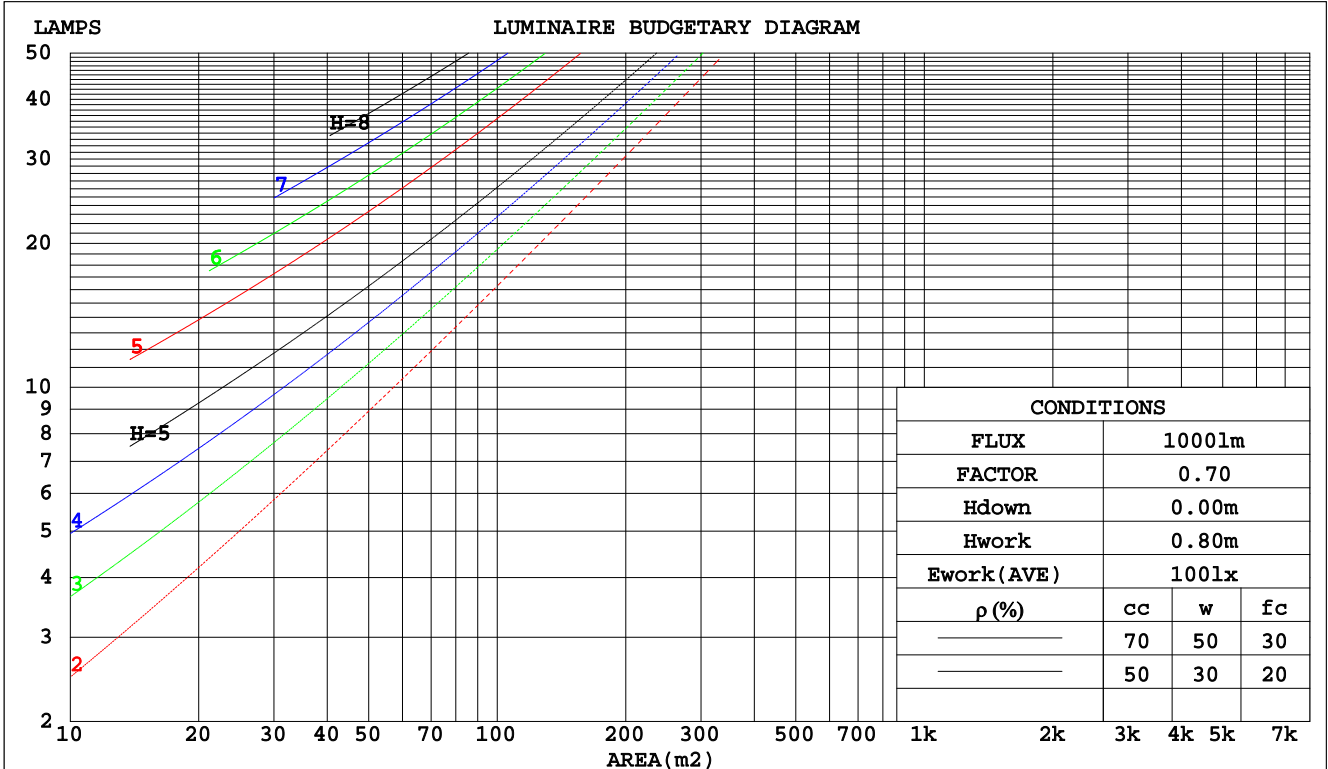
Checker: Near Gao

Assessor: Akin Xu

CU AND LUMINAIRE BUDGETARY ESTIMATE DIAGRAM

Test:U:120.17V I:0.2405A P:28.660W PF:0.9919 Freq:60.00Hz		
Lamp Flux:1540.82x1 lm		
NAME:	TYPE:	WEIGHT:
SPEC.:	DIM.:	SERIAL No.:
MFR.:	SUR.:	Shielding Angle:

pcc	80%			70%			50%			30%			10%			0
pw	50%	30%	10%	50%	30%	10%	50%	30%	10%	50%	30%	10%	50%	30%	10%	0
pfc	20%			20%			20%			20%			20%			0
RCR	RCR:Room Cavity Ratio						Coefficients of Utilization(CU)									
0.0	1.11	1.11	1.11	1.04	1.04	1.04	.92	.92	.92	.81	.81	.81	.71	.71	.71	.66
1.0	.92	.86	.82	.86	.81	.77	.75	.72	.68	.66	.63	.60	.57	.55	.53	.48
2.0	.78	.70	.64	.73	.66	.60	.64	.59	.54	.56	.51	.48	.48	.45	.42	.37
3.0	.68	.59	.52	.63	.55	.49	.56	.49	.44	.48	.43	.39	.41	.37	.34	.30
4.0	.59	.50	.43	.56	.47	.41	.49	.42	.36	.42	.37	.32	.36	.32	.28	.25
5.0	.52	.43	.36	.49	.41	.34	.43	.36	.31	.38	.32	.28	.32	.28	.24	.21
6.0	.47	.38	.31	.44	.36	.30	.39	.32	.27	.34	.28	.24	.29	.25	.21	.18
7.0	.42	.33	.27	.40	.31	.26	.35	.28	.23	.31	.25	.21	.27	.22	.18	.16
8.0	.38	.30	.24	.36	.28	.23	.32	.25	.20	.28	.22	.18	.24	.20	.16	.14
9.0	.35	.27	.21	.33	.25	.20	.29	.23	.18	.26	.20	.16	.22	.18	.14	.12
10.0	.32	.24	.19	.30	.23	.18	.27	.21	.16	.24	.18	.15	.21	.16	.13	.11



C Range: 0 - 360DEG  
 C Interval: 22.5DEG  
 Test Speed: HIGH  
 Temperature:25.1DEG  
 Operators:Wilson  
 Test Date:2022-12-09

γ Range: 0 - 180DEG  
 γ Interval: 0.5DEG  
 Test System:EVERFINE GO-R5000\_V2 SYSTEM V2.00.444  
 Humidity:60.5%  
 Test Distance:2.617m [K=1.0000]  
 Remarks: File No.: WT-F-504-3206-01-A

Checker: Near Gao

Assessor: Akin Xu

WEC AND CCEC

Test:U:120.17V I:0.2405A P:28.660W PF:0.9919 Freq:60.00Hz		
Lamp Flux:1540.82x1 lm		
NAME:	TYPE:	WEIGHT:
SPEC.:	DIM.:	SERIAL No.:
MFR.:	SUR.:	Shielding Angle:

ρcc	80%			70%			50%			30%			10%			0
ρw	50%	30%	10%	50%	30%	10%	50%	30%	10%	50%	30%	10%	50%	30%	10%	0
ρfc	20%			20%			20%			20%			20%			0
RCR	RCR:Room Cavity Ratio						Wall Exitance Coefficients(WEC)									
0.0																
1.0	.385	.219	.069	.368	.210	.067	.335	.192	.061	.305	.176	.056	.277	.160	.052	
2.0	.330	.181	.055	.314	.173	.053	.284	.158	.049	.256	.144	.045	.231	.131	.041	
3.0	.292	.155	.047	.277	.148	.045	.250	.135	.041	.225	.123	.038	.201	.111	.034	
4.0	.262	.136	.040	.249	.130	.038	.224	.119	.035	.201	.108	.032	.179	.097	.030	
5.0	.238	.121	.035	.226	.116	.034	.203	.106	.031	.182	.096	.028	.162	.086	.026	
6.0	.218	.109	.031	.207	.104	.030	.186	.095	.028	.166	.086	.025	.148	.078	.023	
7.0	.201	.099	.028	.191	.095	.027	.171	.087	.025	.153	.078	.023	.136	.071	.021	
8.0	.186	.091	.026	.177	.087	.025	.159	.079	.023	.142	.072	.021	.126	.065	.019	
9.0	.173	.084	.023	.165	.080	.023	.148	.073	.021	.132	.066	.019	.117	.060	.017	
10.0	.162	.078	.022	.154	.074	.021	.139	.068	.019	.124	.062	.017	.110	.055	.016	

ρcc	80%			70%			50%			30%			10%			0
ρw	50%	30%	10%	50%	30%	10%	50%	30%	10%	50%	30%	10%	50%	30%	10%	0
ρfc	20%			20%			20%			20%			20%			0
RCR	RCR:Room Cavity Ratio						Ceiling Cavity Exitance Coefficients(CCEC)									
0.0	.451	.451	.451	.385	.385	.385	.263	.263	.263	.151	.151	.151	.048	.048	.048	
1.0	.448	.418	.391	.383	.359	.336	.262	.247	.233	.151	.143	.135	.048	.046	.044	
2.0	.442	.396	.358	.378	.341	.309	.259	.236	.216	.149	.137	.126	.048	.044	.041	
3.0	.434	.380	.337	.372	.328	.292	.256	.228	.205	.148	.133	.121	.047	.043	.040	
4.0	.427	.368	.323	.366	.318	.281	.252	.222	.198	.146	.130	.117	.047	.042	.038	
5.0	.420	.359	.314	.360	.310	.273	.248	.217	.193	.144	.127	.114	.046	.042	.038	
6.0	.412	.351	.307	.354	.304	.268	.244	.213	.189	.142	.125	.113	.046	.041	.037	
7.0	.405	.345	.302	.349	.299	.263	.241	.210	.187	.140	.123	.111	.045	.040	.037	
8.0	.399	.339	.299	.343	.294	.260	.238	.207	.185	.138	.122	.110	.045	.040	.036	
9.0	.393	.335	.296	.338	.291	.258	.234	.204	.183	.137	.121	.109	.044	.040	.036	
10.0	.387	.331	.293	.334	.287	.256	.232	.202	.182	.135	.119	.109	.044	.039	.036	

C Range: 0 - 360DEG  
 C Interval: 22.5DEG  
 Test Speed: HIGH  
 Temperature:25.1DEG  
 Operators:Wilson  
 Test Date:2022-12-09

γ Range: 0 - 180DEG  
 γ Interval: 0.5DEG  
 Test System:EVERFINE GO-R5000\_V2 SYSTEM V2.00.444  
 Humidity:60.5%  
 Test Distance:2.617m [K=1.0000]  
 Remarks: File No.: WT-F-504-3206-01-A

Checker: Near Gao

Assessor: Akin Xu

UGR(Unified Glare Rating) Table

Test:U:120.17V I:0.2405A P:28.660W PF:0.9919 Freq:60.00Hz										
Lamp Flux:1540.82x1 lm										
NAME:			TYPE:				WEIGHT:			
SPEC.:			DIM.:				SERIAL No.:			
MFR.:			SUR.:				Shielding Angle:			
ceiling/cavity	0.7	0.7	0.5	0.5	0.3	0.7	0.7	0.5	0.5	0.3
walls	0.5	0.3	0.5	0.3	0.3	0.5	0.3	0.5	0.3	0.3
working plane	0.2	0.2	0.2	0.2	0.2	0.2	0.2	0.2	0.2	0.2
Room dimensions	Viewed crosswise					Viewed endwise				
x = 2H y = 2H	16.9	18.1	17.6	18.8	19.7	13.9	15.1	14.6	15.8	16.6
3H	19.9	21.0	20.6	21.7	22.6	15.4	16.5	16.1	17.2	18.1
4H	21.5	22.6	22.3	23.3	24.3	16.0	17.0	16.7	17.8	18.7
6H	23.4	24.4	24.2	25.2	26.1	16.3	17.3	17.1	18.1	19.0
8H	24.5	25.5	25.3	26.2	27.2	16.4	17.4	17.2	18.2	19.1
12H	25.8	26.7	26.6	27.5	28.5	16.5	17.4	17.3	18.2	19.1
4H 2H	17.4	18.5	18.2	19.2	20.1	15.3	16.3	16.0	17.1	18.0
3H	20.6	21.5	21.4	22.3	23.3	17.1	18.0	17.9	18.8	19.7
4H	22.5	23.3	23.3	24.1	25.1	17.8	18.7	18.6	19.5	20.5
6H	24.6	25.3	25.4	26.2	27.2	18.4	19.2	19.3	20.0	21.0
8H	25.8	26.5	26.6	27.3	28.4	18.6	19.3	19.5	20.2	21.2
12H	27.2	27.9	28.1	28.7	29.8	18.8	19.4	19.6	20.3	21.3
8H 4H	22.8	23.5	23.6	24.3	25.4	19.2	19.9	20.1	20.8	21.8
6H	25.2	25.8	26.1	26.7	27.7	20.3	20.9	21.1	21.7	22.8
8H	26.7	27.2	27.5	28.1	29.2	20.7	21.2	21.6	22.1	23.2
12H	28.4	28.8	29.2	29.7	30.8	21.1	21.5	22.0	22.4	23.5
12H 4H	22.8	23.4	23.6	24.3	25.3	19.7	20.4	20.6	21.2	22.3
6H	25.3	25.8	26.2	26.7	27.8	21.1	21.6	22.0	22.5	23.6
8H	26.9	27.3	27.8	28.2	29.3	21.7	22.2	22.6	23.1	24.2
Variations with the observer position at spacings(CIE Pub.117):										
S = 1.0H	+ 0.1 / - 0.1					+ 0.1 / - 0.1				
1.5H	+ 0.2 / - 0.3					+ 0.2 / - 0.3				
2.0H	+ 0.3 / - 0.4					+ 0.3 / - 0.4				

CIE Pub.117, 1541 lm Total Lamp Luminous Flux Corrected (8log(F/F0) = 1.5)  
 Area: 0.07248 m2

C Range: 0 - 360DEG  
 C Interval: 22.5DEG  
 Test Speed: HIGH  
 Temperature:25.1DEG  
 Operators:Wilson  
 Test Date:2022-12-09

γ Range: 0 - 180DEG  
 γ Interval: 0.5DEG  
 Test System:EVERFINE GO-R5000\_V2 SYSTEM V2.00.444  
 Humidity:60.5%  
 Test Distance:2.617m [K=1.0000]  
 Remarks: File No.: WT-F-504-3206-01-A

Checker: Near Gao

Assessor: Akin Xu

**UTILIZATION FACTORS TABLE**

Test:U:120.17V I:0.2405A P:28.660W PF:0.9919 Freq:60.00Hz Lamp Flux:1540.82x1 lm		
NAME:	TYPE:	WEIGHT:
SPEC.:	DIM.:	SERIAL No.:
MFR.:	SUR.:	Shielding Angle:

REFLECTANCE										
Ceiling	0.8	0.8	0.8	0.7	0.7	0.7	0.5	0.5	0.5	0
Walls	0.7	0.5	0.3	0.7	0.5	0.3	0.7	0.5	0.3	0
Working plane	0.2	0.2	0.2	0.2	0.2	0.2	0.2	0.2	0.2	0
ROOM INDEX	UTILIZATION FACTORS(PERCENT) $k(RI) \times RCR = 5$									
k = 0.60	42	30	23	41	29	22	38	28	21	15
0.80	51	38	30	49	37	29	45	35	28	19
1.00	59	45	36	56	44	36	51	43	34	24
1.25	66	52	43	62	50	42	57	47	39	28
1.50	71	58	49	67	55	47	61	51	44	31
2.00	78	66	58	74	63	55	66	58	51	36
2.50	83	72	63	78	69	61	70	62	56	40
3.00	87	77	69	82	73	66	73	66	60	43
4.00	92	83	76	86	79	72	77	71	66	47
5.00	95	87	81	89	83	77	79	74	69	49
ROOM INDEX	UF(total)									Direct
According to DIN EN 13032-2 2004			Suspended				SHRNOM = 1.25			

C Range: 0 - 360DEG  
 C Interval: 22.5DEG  
 Test Speed: HIGH  
 Temperature:25.1DEG  
 Operators:Wilson  
 Test Date:2022-12-09

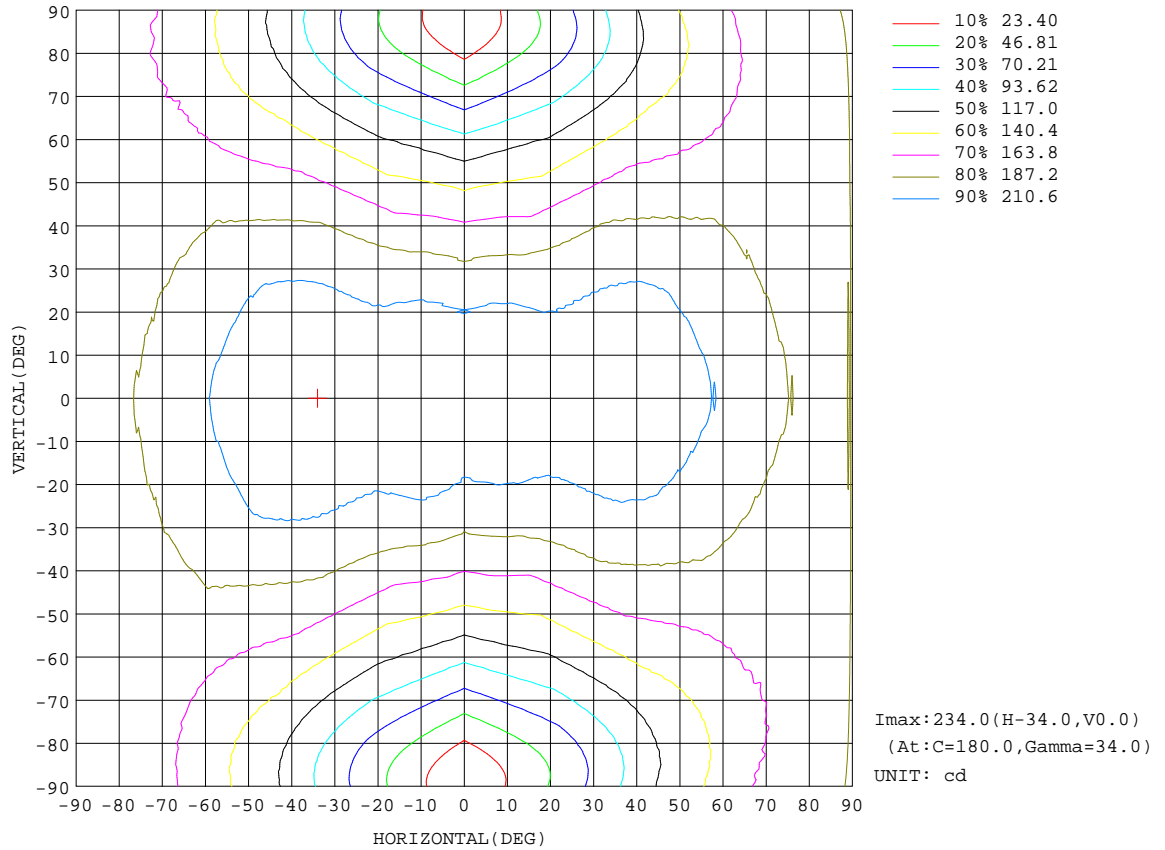
$\gamma$  Range: 0 - 180DEG  
 $\gamma$  Interval: 0.5DEG  
 Test System:EVERFINE GO-R5000\_V2 SYSTEM V2.00.444  
 Humidity:60.5%  
 Test Distance:2.617m [K=1.0000]  
 Remarks: File No.: WT-F-504-3206-01-A

Checker: Near Gao

Assessor: Akin Xu

ISOCANDELA DIAGRAM

Test:U:120.17V I:0.2405A P:28.660W PF:0.9919 Freq:60.00Hz Lamp Flux:1540.82x1 lm		
NAME:	TYPE:	WEIGHT:
SPEC.:	DIM.:	SERIAL No.:
MFR.:	SUR.:	Shielding Angle:



C Range: 0 - 360DEG  
 C Interval: 22.5DEG  
 Test Speed: HIGH  
 Temperature: 25.1DEG  
 Operators: Wilson  
 Test Date: 2022-12-09

γ Range: 0 - 180DEG  
 γ Interval: 0.5DEG  
 Test System: EVERFINE GO-R5000\_V2 SYSTEM V2.00.444  
 Humidity: 60.5%  
 Test Distance: 2.617m [K=1.0000]  
 Remarks: File No.: WT-F-504-3206-01-A

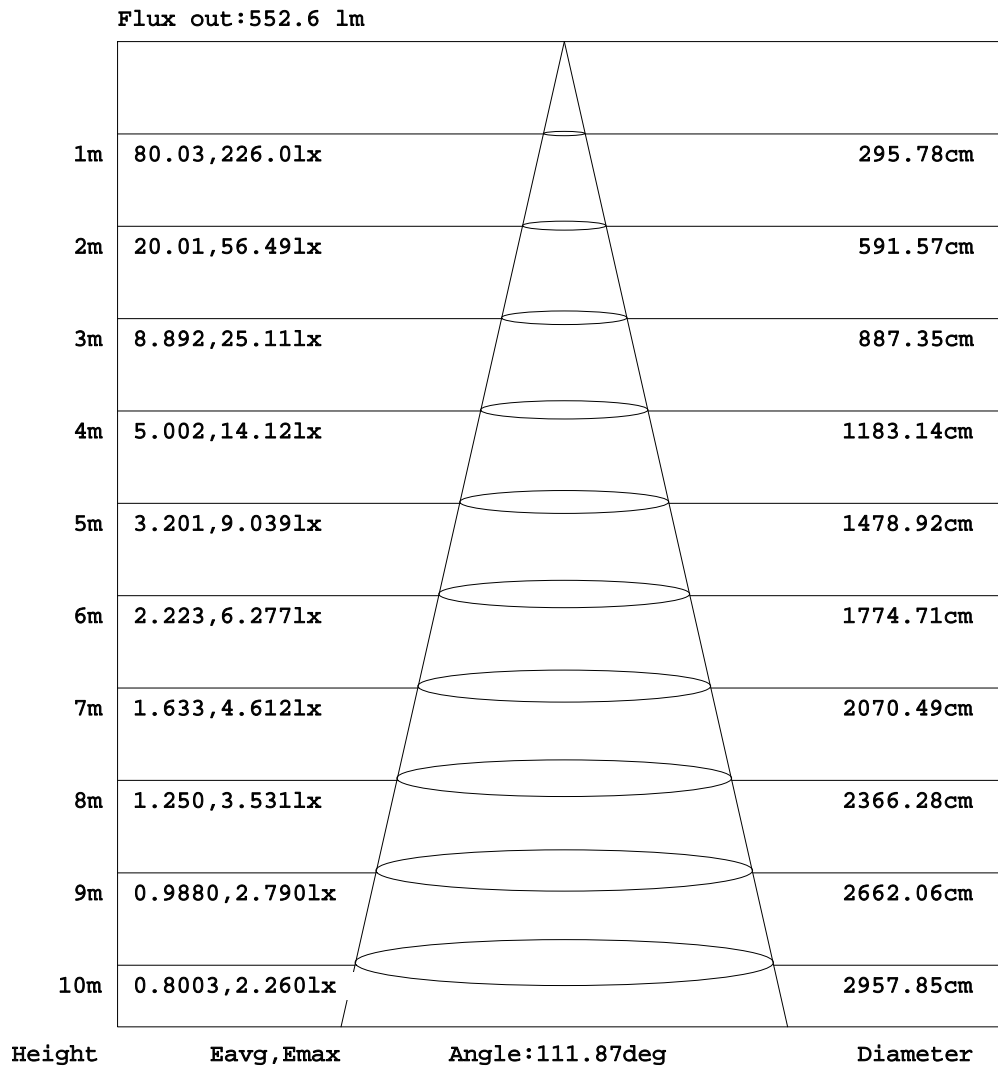
Checker: Near Gao

Assessor: Akin Xu



AAI Figure

Test:U:120.17V I:0.2405A P:28.660W PF:0.9919 Freq:60.00Hz Lamp Flux:1540.82x1 lm		
NAME:	TYPE:	WEIGHT:
SPEC.:	DIM.:	SERIAL No.:
MFR.:	SUR.:	Shielding Angle:



Note: The Curves indicate the illuminated area and the average illumination when the luminaire is at different distance.

C Range: 0 - 360DEG  
 C Interval: 22.5DEG  
 Test Speed: HIGH  
 Temperature: 25.1DEG  
 Operators: Wilson  
 Test Date: 2022-12-09

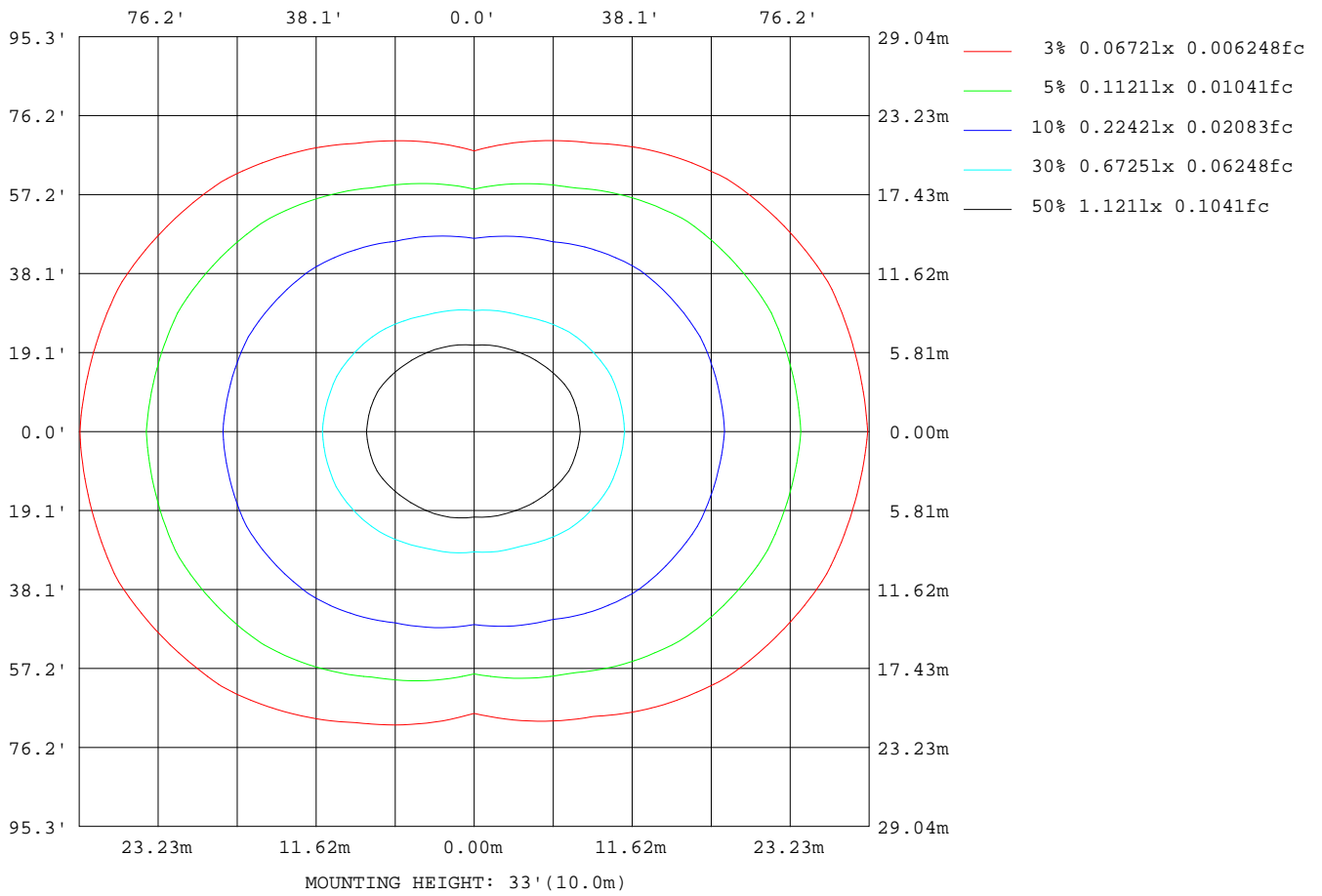
γ Range: 0 - 180DEG  
 γ Interval: 0.5DEG  
 Test System: EVERFINE GO-R5000\_V2 SYSTEM V2.00.444  
 Humidity: 60.5%  
 Test Distance: 2.617m [K=1.0000]  
 Remarks: File No.: WT-F-504-3206-01-A

Checker: Near Gao

Assessor: Akin Xu

ISOLUX DIAGRAM

Test:U:120.17V I:0.2405A P:28.660W PF:0.9919 Freq:60.00Hz Lamp Flux:1540.82x1 lm		
NAME:	TYPE:	WEIGHT:
SPEC.:	DIM.:	SERIAL No.:
MFR.:	SUR.:	Shielding Angle:



C Range: 0 - 360DEG  
 C Interval: 22.5DEG  
 Test Speed: HIGH  
 Temperature:25.1DEG  
 Operators:Wilson  
 Test Date:2022-12-09

γ Range: 0 - 180DEG  
 γ Interval: 0.5DEG  
 Test System:EVERFINE GO-R5000\_V2 SYSTEM V2.00.444  
 Humidity:60.5%  
 Test Distance:2.617m [K=1.0000]  
 Remarks: File No.: WT-F-504-3206-01-A

Checker: Near Gao

Assessor: Akin Xu

**LED Avg.L Report**

Test:U:120.17V I:0.2405A P:28.660W PF:0.9919 Freq:60.00Hz Lamp Flux:1540.82x1 lm		
NAME:	TYPE:	WEIGHT:
SPEC.:	DIM.:	SERIAL No.:
MFR.:	SUR.:	Shielding Angle:

AvgL	cd/m2
L_0~180(65)av	6572
L_0~180(75)av	10039
L_0~180(85)av	28596
L_90~270(65)av	2565
L_90~270(75)av	2044
L_90~270(85)av	885
L_45(65)av	5125
L_45(75)av	7182
L_45(85)av	19133

Standard: GB/T 29293-2012

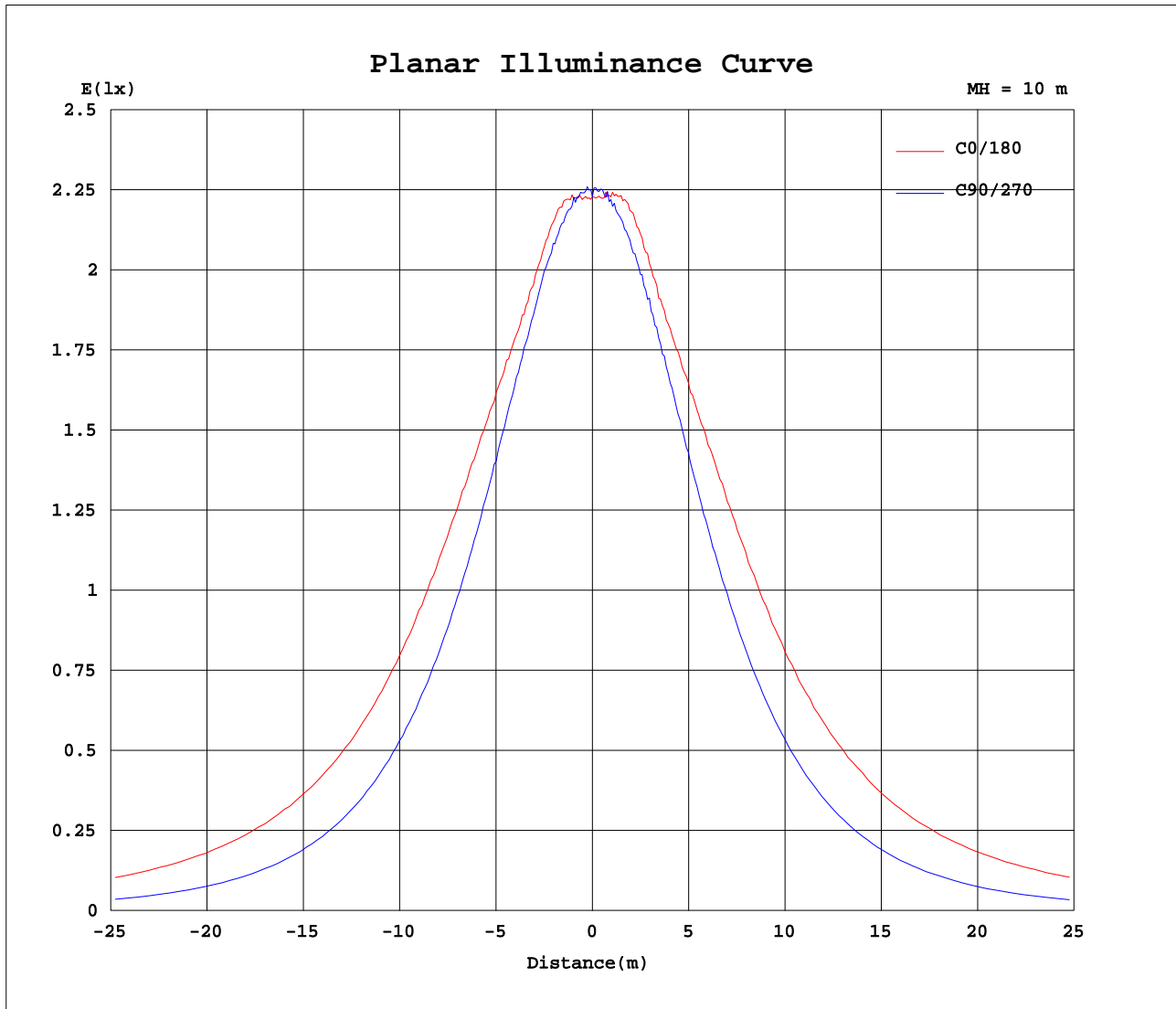
C Range: 0 - 360DEG  
 C Interval: 22.5DEG  
 Test Speed: HIGH  
 Temperature:25.1DEG  
 Operators:Wilson  
 Test Date:2022-12-09

γ Range: 0 - 180DEG  
 γ Interval: 0.5DEG  
 Test System:EVERFINE GO-R5000\_V2 SYSTEM V2.00.444  
 Humidity:60.5%  
 Test Distance:2.617m [K=1.0000]  
 Remarks: File No.: WT-F-504-3206-01-A

Checker: Near Gao

Assessor: Akin Xu

Planar Illuminance Curve



C Range: 0 - 360DEG  
 C Interval: 22.5DEG  
 Test Speed: HIGH  
 Temperature: 25.1DEG  
 Operators: Wilson  
 Test Date: 2022-12-09

γ Range: 0 - 180DEG  
 γ Interval: 0.5DEG  
 Test System: EVERFINE GO-R5000\_V2 SYSTEM V2.00.444  
 Humidity: 60.5%  
 Test Distance: 2.617m [K=1.0000]  
 Remarks: File No.: WT-F-504-3206-01-A

Checker: Near Gao

Assessor: Akin Xu

LUMINOUS DISTRIBUTION INTENSITY DATA

Test:U:120.17V I:0.2405A P:28.660W PF:0.9919 Freq:60.00Hz		
Lamp Flux:1540.82x1 lm		
NAME:	TYPE:	WEIGHT:
SPEC.:	DIM.:	SERIAL No.:
MFR.:	SUR.:	Shielding Angle:

Table--1

UNIT: cd

C(DEG)\ γ (DEG)	0	22.5	45	67.5	90	112.5	135	157.5	180	202.5	225	247.5	270	292.5	315	337.5			
0	223	223	223	223	223	223	223	223	223	223	223	223	223	223	223	223			
5	225	224	223	221	224	225	225	226	226	225	224	222	224	224	224	225			
10	229	227	224	220	221	223	228	231	232	230	226	220	222	223	227	229			
15	225	225	224	218	217	221	228	230	230	229	228	219	216	221	225	227			
20	224	221	217	212	208	217	224	226	227	225	223	215	209	216	220	222			
25	224	220	211	205	200	211	217	224	228	224	215	210	202	209	213	221			
30	228	220	205	196	189	202	210	226	232	225	209	200	191	199	208	222			
35	229	221	202	185	178	191	206	226	232	225	206	190	180	188	204	223			
40	229	219	196	172	164	178	202	225	233	224	201	177	166	175	201	222			
45	225	214	192	160	150	165	197	221	228	220	196	164	151	163	196	218			
50	221	208	183	147	133	152	190	216	224	213	188	151	134	150	189	212			
55	214	202	174	134	117	140	182	209	217	206	179	138	117	137	179	206			
60	209	193	163	121	98.3	127	171	201	211	198	167	124	97.3	124	170	199			
65	201	185	152	106	79.3	113	161	193	202	189	156	110	77.8	110	158	190			
70	195	176	140	90.9	59.6	98.0	150	185	196	181	144	93.5	57.1	94.4	148	183			
75	188	169	129	75.8	39.5	83.0	139	177	189	172	133	78.1	37.2	80.1	138	175			
80	184	163	120	62.1	21.1	69.3	130	170	183	165	123	63.5	18.4	66.6	130	170			
85	183	161	116	53.5	6.51	60.2	124	166	179	160	117	54.8	4.67	59.6	127	168			
90	189	165	118	54.3	0.84	59.1	124	166	179	161	116	54.0	0.67	61.5	131	175			
95	194	170	123	58.4	1.05	63.8	129	172	184	165	121	58.8	1.23	66.4	136	179			
100	198	173	127	61.8	2.62	67.9	133	175	189	170	124	61.1	2.52	68.1	139	182			
105	198	175	129	56.2	4.60	62.5	136	178	190	172	127	55.1	4.29	61.4	141	184			
110	198	174	125	48.0	6.88	54.6	132	177	191	172	122	46.6	6.14	52.2	135	182			
115	191	166	112	38.8	9.10	45.4	120	170	186	163	110	37.8	8.26	42.6	120	173			
120	173	149	96.8	32.9	11.2	38.9	104	152	169	147	95.0	32.8	9.72	37.9	104	155			
125	150	129	80.3	31.4	12.9	37.5	88.2	133	149	127	79.8	31.9	11.2	35.5	86.0	133			
130	127	108	64.5	29.9	14.5	36.0	71.7	112	127	107	63.8	30.8	12.4	31.0	68.5	112			
135	104	86.7	50.3	29.3	16.6	34.4	57.0	90.9	104	86.2	50.5	30.0	14.4	32.3	54.9	89.3			
140	79.9	66.7	46.6	28.8	19.8	33.2	51.4	70.5	81.1	66.8	46.5	29.3	17.3	31.4	50.3	69.0			
145	60.4	55.0	43.2	28.0	22.5	30.5	47.5	57.6	61.2	54.7	43.4	28.5	20.6	30.0	45.9	57.0			
150	53.9	49.4	39.3	27.5	24.0	29.4	43.2	51.9	54.7	49.6	39.9	27.6	22.9	29.2	41.5	50.8			
155	47.4	43.8	35.6	26.2	25.3	29.8	39.0	46.1	48.4	44.3	36.4	27.4	24.8	28.8	37.1	44.8			
160	40.8	37.9	32.0	27.2	25.8	29.2	34.7	40.1	42.1	39.0	32.9	27.4	25.3	28.4	33.0	38.7			
165	33.9	32.9	29.9	22.1	20.4	26.4	30.2	34.3	35.3	33.6	30.2	26.7	19.3	25.7	30.6	33.2			
170	30.5	29.6	20.7	16.3	17.6	18.9	23.6	30.1	30.8	29.9	28.0	14.4	14.7	18.4	28.7	30.2			
175	28.2	18.1	16.9	19.2	18.7	18.7	18.5	18.6	27.8	27.2	18.2	14.5	16.0	16.1	22.3	27.2			
180	15.0	15.0	15.0	15.0	15.0	15.0	15.0	15.0	14.8	14.8	14.8	14.8	14.8	14.8	14.8	14.8			

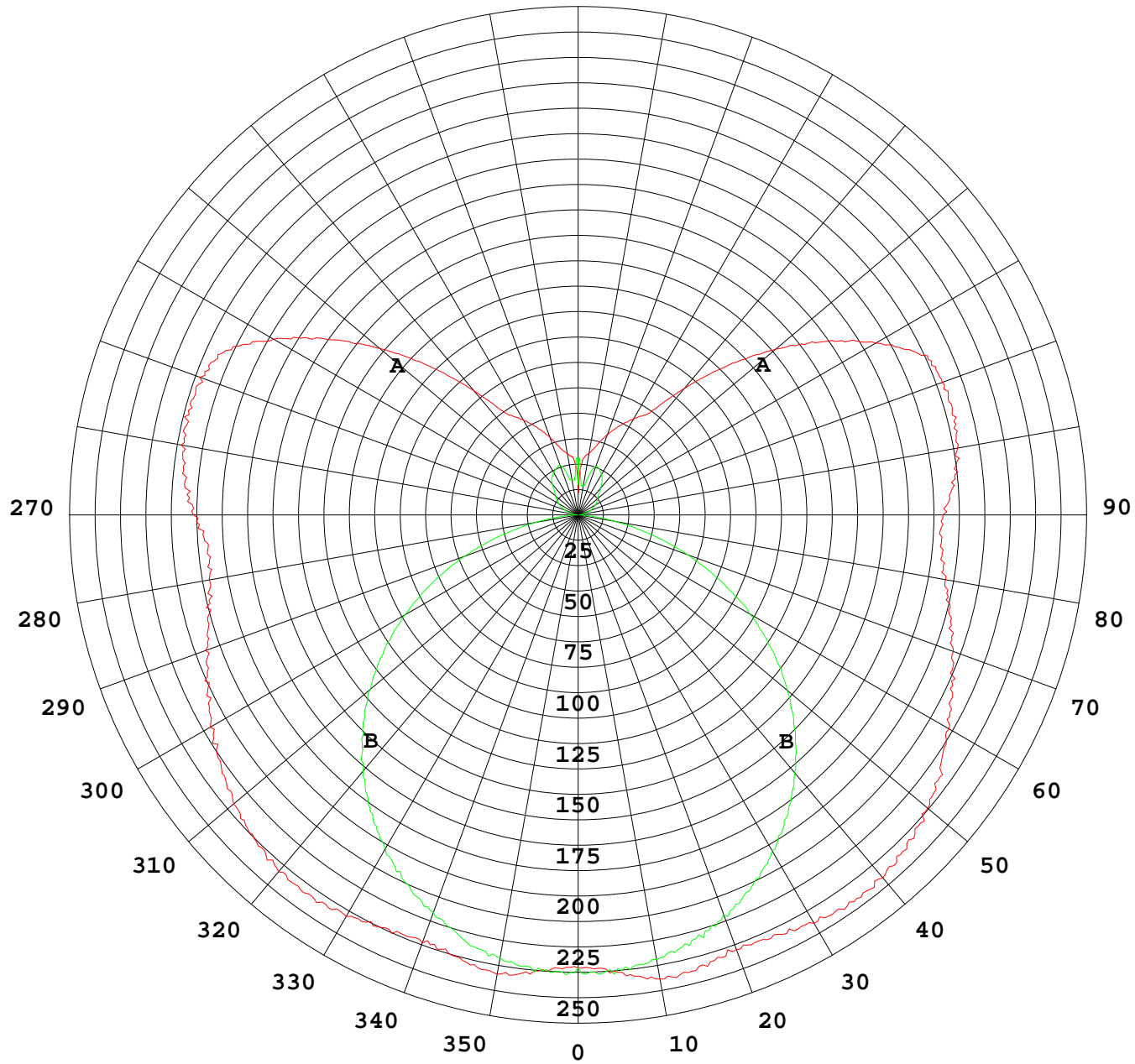
C Range: 0 - 360DEG  
 C Interval: 22.5DEG  
 Test Speed: HIGH  
 Temperature:25.1DEG  
 Operators:Wilson  
 Test Date:2022-12-09

γ Range: 0 - 180DEG  
 γ Interval: 0.5DEG  
 Test System:EVERFINE GO-R5000\_V2 SYSTEM V2.00.444  
 Humidity:60.5%  
 Test Distance:2.617m [K=1.0000]  
 Remarks: File No.: WT-F-504-3206-01-A

Checker: Near Gao

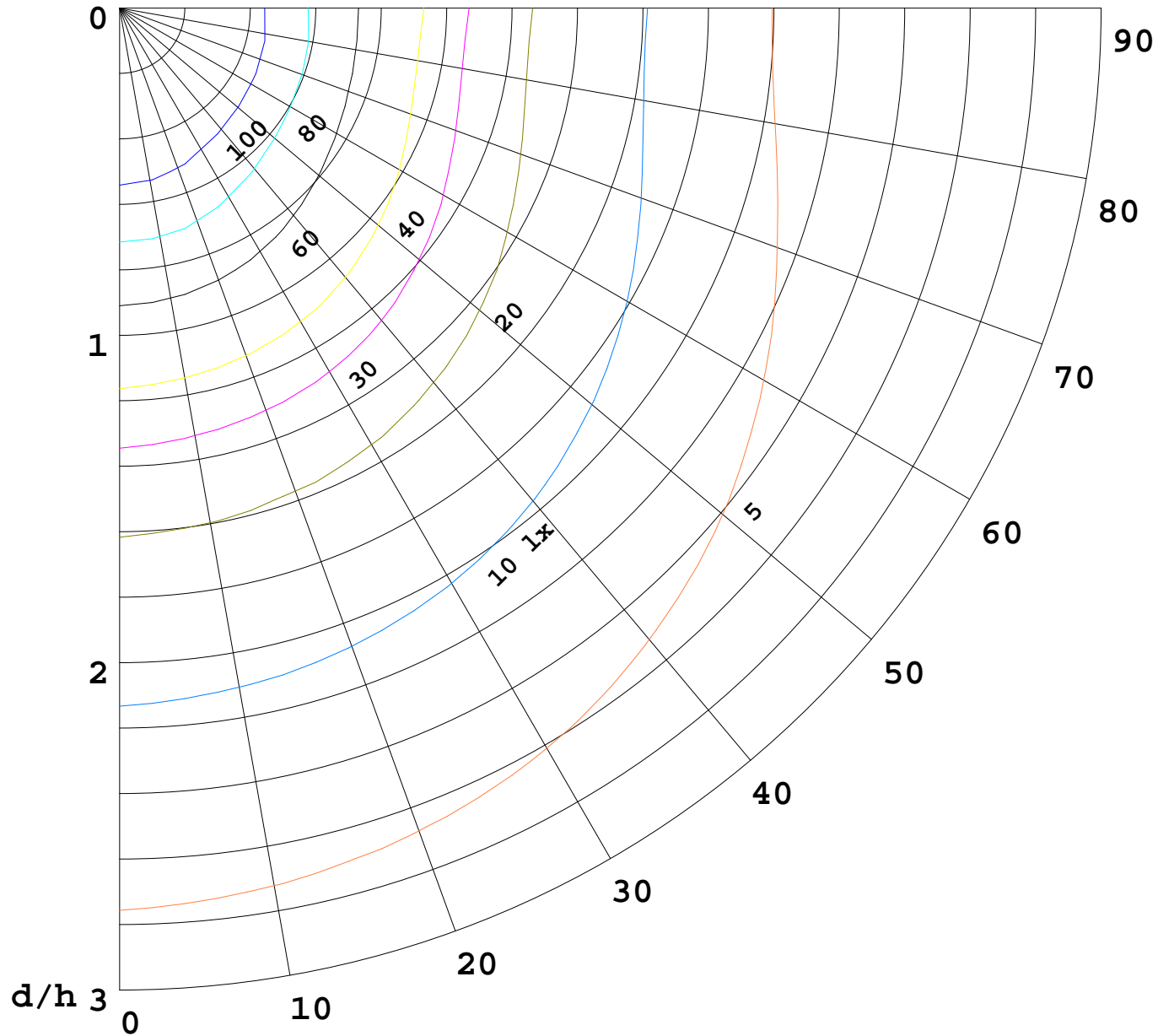
Assessor: Akin Xu

I(cd)



1000 lm

$K = 1$



**F** = 1000 lm  
**K** = 0.7  
**Hcc** = 0.8 m  
**Hfc** = 0.0 m  
**Eave** = 100 lx

	<b>Pcc</b>	<b>Pw</b>	<b>Pfc</b>
—————	70	50	30
—————	50	30	20

